

St Albans Office
10 High Street, St Albans
Herts AL3 4EL
01727 228428
stalbans@cassidyandtate.co.uk

Marshalswick Office
59 The Quadrant, St Albans,
Herts AL4 9RD
01727 832383
marshalswick@cassidyandtate.co.uk

Wheathampstead Office
39 High Street, Wheathampstead,
Herts AL4 8BB
01582 831200
wheathampstead@cassidyandtate.co.uk

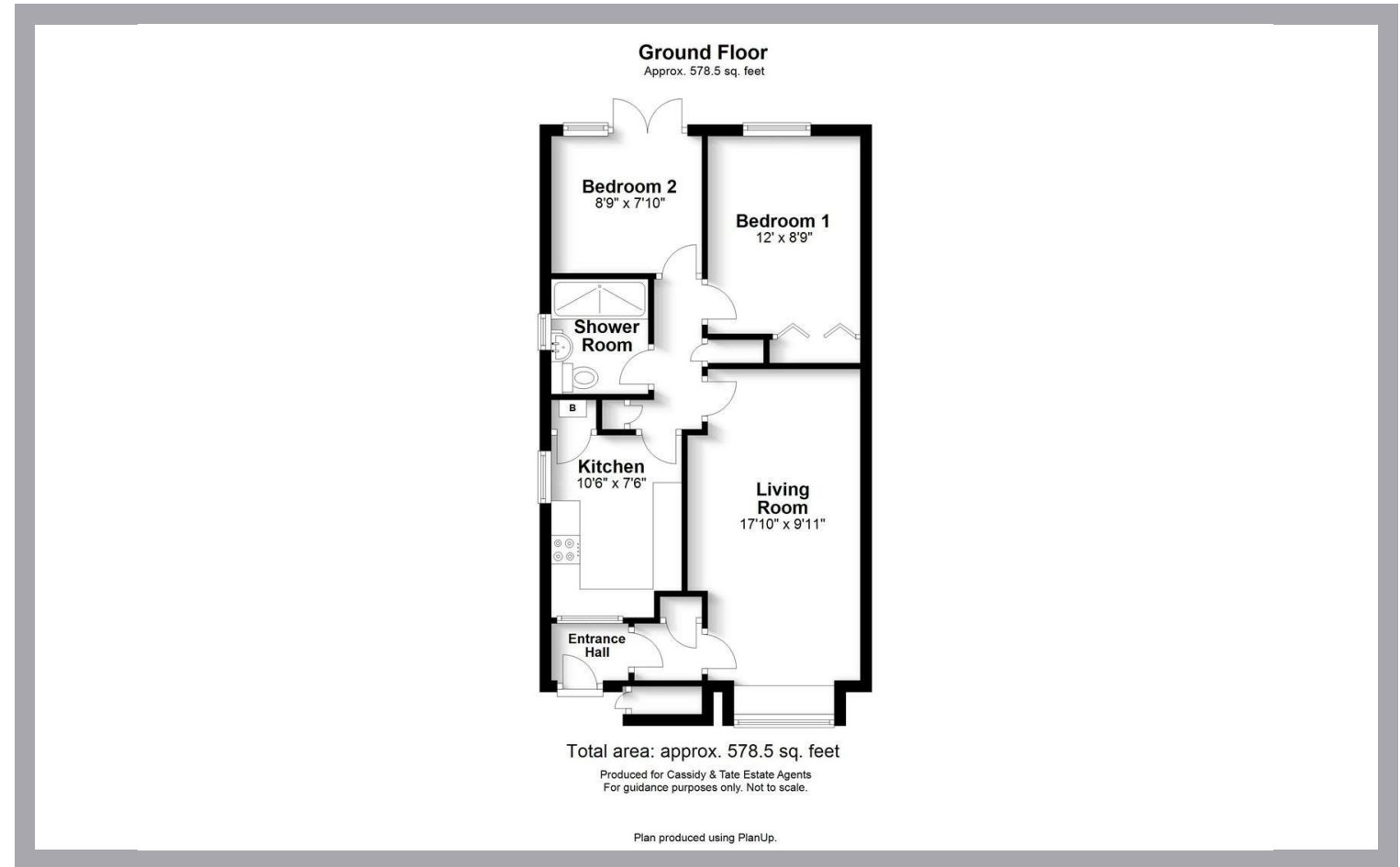
Knightsbridge Office
45 Pont Street, Knightsbridge
London SW1X 0BD
020 7629 9966
26@theknightsbridgeoffice.co.uk

Cassidy
& Tate
Your Local Experts



Award Winning Agency

HUNT CLOSE
ST. ALBANS
AL4 9JH



Cassidy & Tate have taken all reasonable steps to ensure the accuracy of the details supplied in our marketing material however, details are provided as a guide only and we advise prospective purchasers to confirm details upon inspection of the property. Cassidy & Tate will not be held liable for any costs which are incurred as a result of discrepancies.

All The Ingredients Needed For A Fabulous Lifestyle

Positioned in the popular Jersey Farm development, is this rarely available and much sought after two bedroom semi detached bungalow. This property would make a wonderful home for first time buyers or clients that are looking to downsize. The property features a well proportioned lounge/dining room, fitted kitchen, two bedrooms and a modern shower room. Outside is a small front paved entrance and a delightful rear garden with patio. Hunt Close is being sold with the added benefit of no upper chain. Jersey Farm benefits from a small parade of shops, doctor and dentist surgeries. St Albans city centre and the mainline railway station remain a short distance away.



Specialists in Bespoke Properties

- Located In Jersey Farm
- Semi Detached
- Sunny Rear Aspect
- Single Garage
- Sought After Bungalow
- Two Bedrooms
- Chain Free
- Potential To Extend STPP

Energy Efficiency Rating	Current	Potential
Very energy efficient - lower running costs		
(92 plus) A		
(81-91) B		
(69-80) C		
(55-68) D		
(39-54) E		
(21-38) F		
(1-20) G		
Not energy efficient - higher running costs		
England & Wales	EU Directive 2002/91/EC	

Environmental Impact (CO ₂) Rating	Current	Potential
Very environmentally friendly - lower CO ₂ emissions		
(92 plus) A		
(81-91) B		
(69-80) C		
(55-68) D		
(39-54) E		
(21-38) F		
(1-20) G		
Not environmentally friendly - higher CO ₂ emissions		
England & Wales	EU Directive 2002/91/EC	

